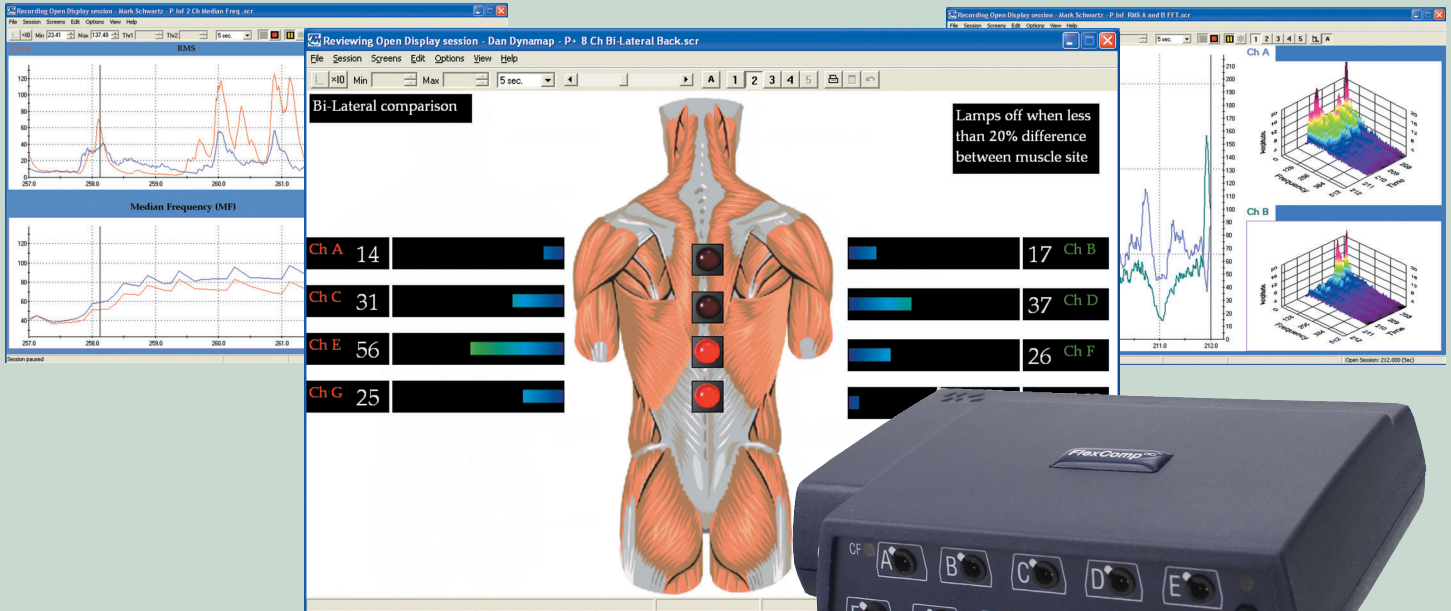


DYNAMIC MUSCLE ANALYSIS

Analyze - Document - Treat™



FlexComp and ProComp Infiniti™ are at the heart of the Sports Science of Milan Lab at A.C. Milan



DynaMap provides you with a clear picture of your patient's muscle health, through graphical displays and statistical information to enhance treatments and track progress for reimbursement.

With active sensors monitoring signals as small as .1 microvolts, you can dynamically view and rectify muscle asymmetry, to enhance muscle health.

Monitoring SEMG saves time and avoids potential injury during the rehabilitation process. By observing median frequency you can optimize exercises and diminish fatigue. Identify dysponesis by adding a webcam and perform post monitoring synchronized video analyses, to quantify SEMG throughout the range of motion. Expand from SEMG to EEG, EKG, skin conductance, temperature, HR/BVP and respiration to turn the system into a comprehensive sports medicine tool.

ProComp2, ProComp Infiniti, FlexComp Infiniti; from 1 to 40 channel systems, we meet your clinical and budgetary requirements.

**CALL 1-800-361-3651 FOR
FREE WORKSHOP INFORMATION**



Thought Technology Ltd.

Tel: (800) 361-3651 • 514-489-8251 Fax: 514-489-8255

<http://www.thoughttechnology.com>

MAR720-00